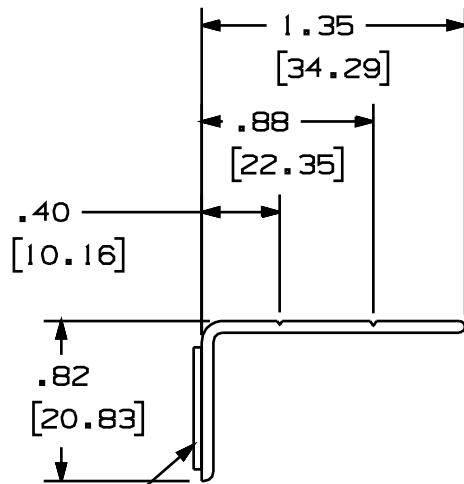
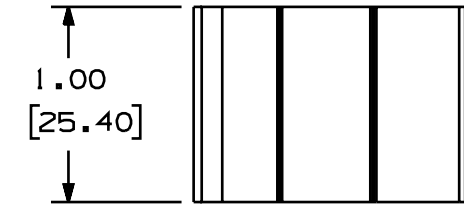


THIS COPY IS PROVIDED ON A RESTRICTED BASIS AND IS NOT TO BE USED IN ANY WAY DETRIMENTAL TO THE INTERESTS OF PANDUIT CORP.



— PRESSURE SENSITIVE FOAM TAPE  
.040 [1.02] THICK WITH  
PROTECTIVE LINER.

NOTE.

1. SEE CURRENT CATALOG FOR PART NO. SUFFIX DESIGNATION FOR PACKAGE SIZE AND COLOR.
2. PART IS DESIGNED TO SUPPORT 3[LBS] [14[g]] MAX. WEIGHT PER 1.00 [25.4mm] ON A CLEAN, DRY, SMOOTH SURFACE.
3. TO APPLY:
  - a. REMOVE PROTECTIVE LINER.
  - b. PLACE IN DESIRED LOCATION.
  - c. APPLY PRESSURE TO THE RETAINER.
4. USE RETAINER AT FULL HEIGHT FOR BEST WIRE RETENTION WITHIN 2" WIDE PANDUIT SOLID WALL DUCT SIZES. SNAP RETAINER AT .88" [22.35mm] HEIGHT FOR BEST WIRE RETENTION WITHIN 1.5" WIDE PANDUIT SOLID WALL DUCT SIZES. SNAP RETAINER AT .40" [10.16mm] HEIGHT FOR BEST WIRE RETENTION WITHIN 1" WIDE PANDUIT SOLID WALL DUCT SIZES.
5. NO WARRANTY, EXPRESSED OR IMPLIED, IS MADE BY PANDUIT WITH RESPECT TO ADHESIVE BOND PERFORMANCE. AMONG OTHER THINGS, THE CONDITION UNDER WHICH THESE MOUNTS MAY BE APPLIED AND/OR THE SURFACE TO WHICH THEY MAY BE APPLIED ARE BEYOND PANDUIT'S CONTROL.

CAD FILENAME/LAYERS D364002BJ\_DC\_WRS-A\_00A.prt

PANDUIT CORP. TINLEY PARK, ILLINOIS

SOLID WALL DUCT WIRE RETAINER  
(WRS-A) CUSTOMER DRAWING

UNLESS OTHERWISE SPECIFIED,  
DIMENSIONAL TOLERANCES ARE:  
(.X) : .1 (.XXX) : .005  
(.XX) : .01 ANGLES : 1°

UNLESS OTHERWISE SPECIFIED,  
ALL DIMENSIONS ARE GIVEN  
IN INCHES, THIRD ANGLE PROJECTION.

DRAWN BY  
JCST

MAT'L:

SCALE FULL

R 9-17-01 JCST JKG RELEASED TO PRODUCTION

36402-11 JKG JKG

DATE  
9-17-01

POLYVINYL  
CHLORIDE

DRAWING NO.  
36402-11

DWG  
A  
SIZE

REV DATE BY CHK DESCRIPTION

ECN - R CUST SUP

CHK'D  
JKG